

Steerman's product range consists of shifting skates, a wide choice of hydraulic jacks together with specialist industrial trailers designed and manufactured to suit customer's particular needs. An ever increasing range of material handling equipment currently includes pallet trucks, manual and powered stackers and engineer's tools.

Also available from Steerman Load Moving Systems:



- **Full Range of Nylon Wheeled Skates**

All Steerman load moving skates comprise of a steerable front section and a pair of adjustable rear trolleys. These innovative systems are available in capacities ranging from 5 to 100 tonnes and can be stripped down to component parts for easy transportation.



- **Full Range of Pallet Trucks and Stackers**

Once again premium quality pallet trucks and stackers are offered at the most competitive prices. Full technical advice and product support ensures you and your customer's have the confidence to use Steerman's quality equipment.

STEERMAN LOAD MOVING SYSTEMS

7A, Hortonwood 10
Telford
Shropshire
TF1 7ES
United Kingdom
Tel: +44 (0) 1952 605500
Fax: +44 (0) 1952 277610
Email: sales@steerman.co.uk
Web Site: www.steerman.co.uk

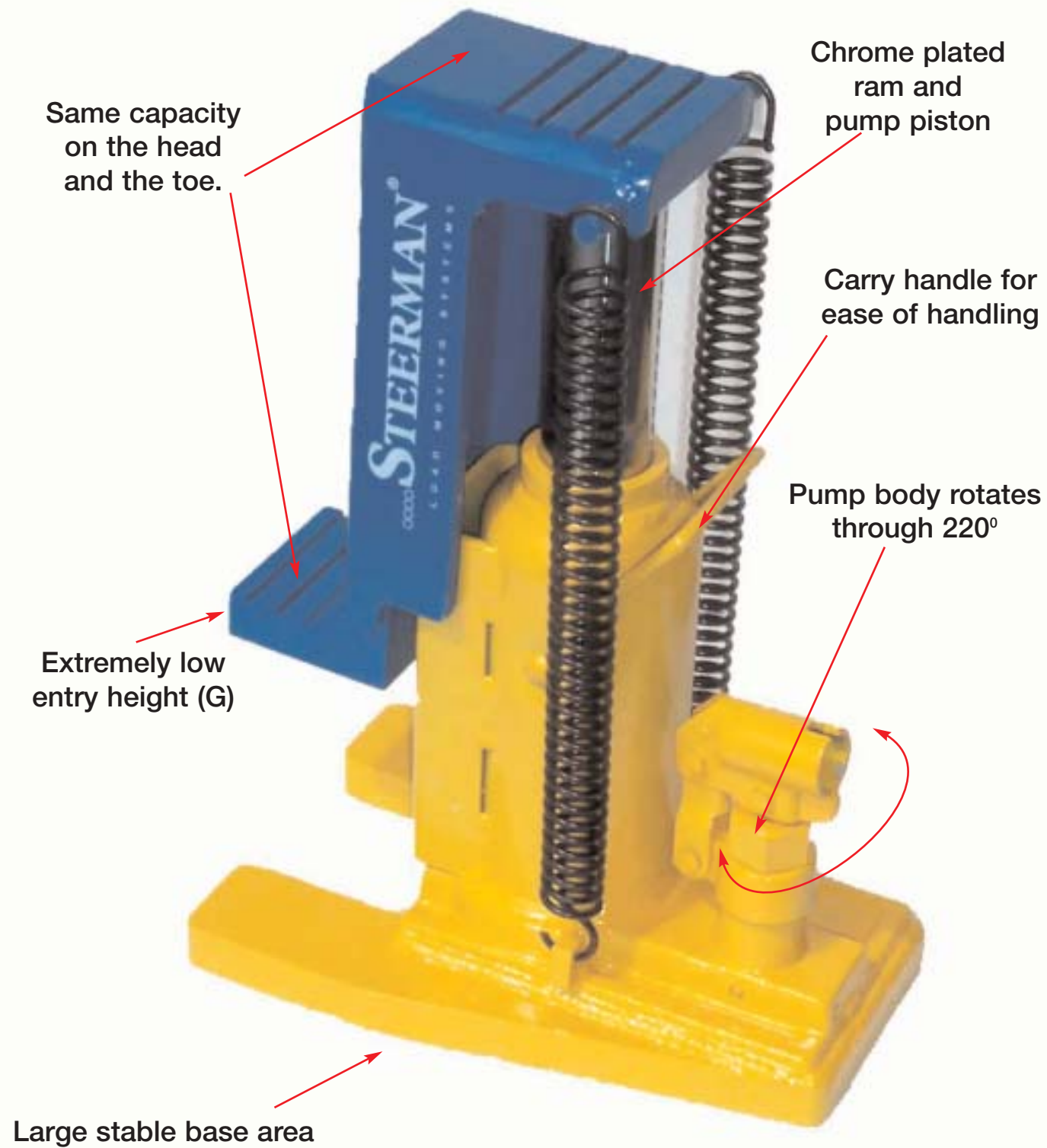
Lifting Loads

the professional way!



Steerman Load Moving Systems

NEW range of Hydraulic Toe Jacks



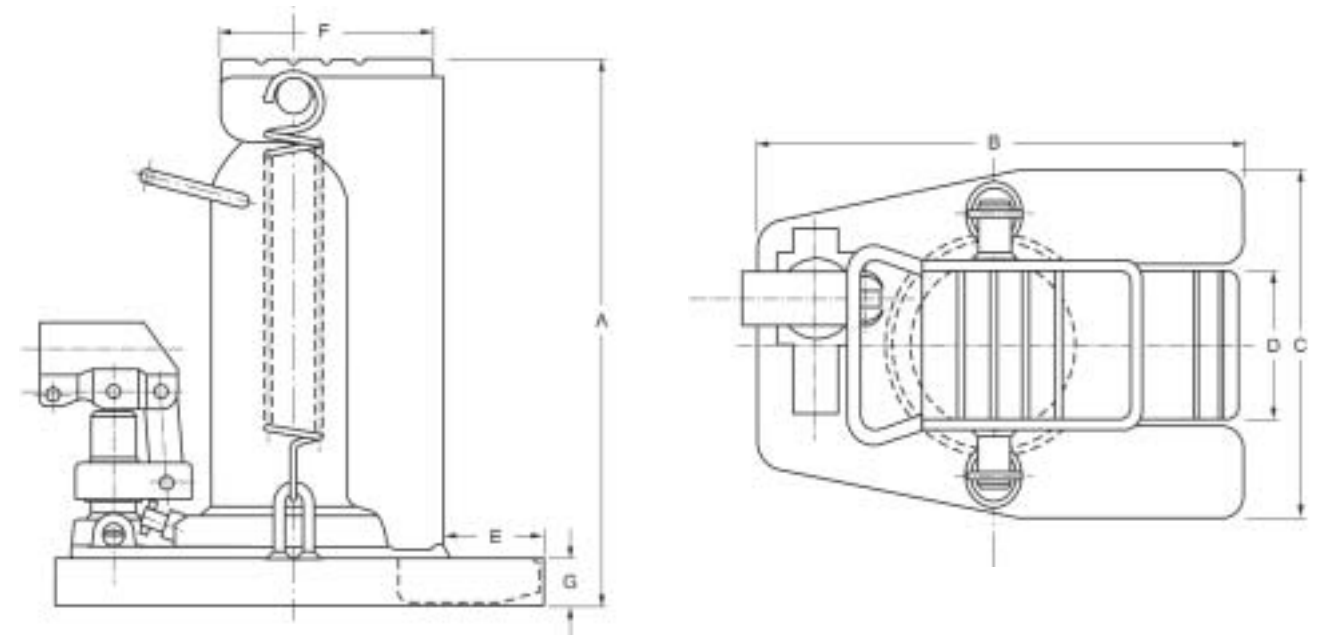
Steerman model shown is the: HTJ-6

Features & Benefits

Steerman Toe Jack Features and Benefits Include:

- Maximum strength is achieved via heat treated and chromed medium-carbon steel cylinder.
- Chrome-plated cylinder ram and pump piston ensures longer seal life and provides continuous optimum performance.
- The hydraulic system is protected from internal damage via an overload protection device.
- Interchangeable operating handles on both the 6 and 10 tonne models.
- The unit has external return springs to quickly bring the jack down to the closed position.
- The rotating pump body allows pumping action to take place in confined areas and combined with the large base, gives a stable platform for load supporting.
- The hydraulic overload protection device ensures the safety of the operator and prevents damage to the equipment.
- The low entry height of the toe allows access to even the most awkward equipment.
- The claw is easily removed to allow for maintenance.
- The rugged design and construction withstands the most arduous working conditions.
- Typical uses include lifting and positioning of heavy machinery, fabricated steel structures and general engineering applications.

Technical Information



Model	Capacity kgs	Stroke mm	A mm	B mm	C mm	D mm	E mm	F mm	G mm	Weight kgs
HTJ-6	6000	152	268	280	190	80	52	120	22	23.2
HTJ-10	10000	130	280	295	230	100	60	240	29	38.2